

圣奥总部

中国·杭州市钱江新城市民街 200 号圣奥中央商务大厦

Headquarters

Sunon Central Business Building, No.200 Citizen Street,
Qianjiang CBD, Hangzhou, Zhejiang, China
TEL: +86 571 88166666 +86 571 87171168 PC: 310020

萧山生产基地

中国·杭州市萧山经济技术开发区宁东路 35 号

Xiaoshan Manufacturing Base

No.35 Ningdong Road, Xiaoshan Eco&Tech Zone, Hangzhou, Zhejiang, China
TEL: +86 571 82833568 PC: 311200

海宁生产基地

中国浙江省海宁市尖山新区安仁路 6 号

Haining Manufacturing Base

No.6 Anren Road, Jianshan New Area, Haining, Zhejiang, China
TEL: +86 573 87800900 PC: 314415



V1-202004P1-5000



NATURAL JOY
然之趣

空间自然有趣 释放“办公生产力”

在以空间效能作为衡量办公效率标准之一的新型办公环境下，然之趣立足于“人、空间、发展”三大要素，以多元多变的组合形式，赋予空间极大的灵活性及操控性，帮助企业构建出“专注模式 - 协同模式”的全面办公生态空间；

其极具人文关怀的功能细节设计，充分关照了员工的情感诉求，帮助员工深度参与到环境与工作本身，激发办公主动性和创造性，释放企业的“办公生产力”，助力企业实现长远发展。



Release “Office Output” in Space of Joyous Nature

When space effectiveness ascends to be an important measure of office efficiency, what is cherished the most? The answer is space flexibility and people's control over objects. Natural Joy series is developed based on these ideas to achieve harmony among people, space and development. With its numerous combination possibilities, Natural Joy helps create a comprehensive office system featured by "Concentration & Collaboration".

With its thoughtful and user-friendly design details, Natural Joy gives employees a feeling of being cared for. Working engagement and workplace satisfaction can be enhanced. When the environment imposes no restriction, initiative and creativity are expected to increase in a significant way: "office output" can be further released, which facilitates healthy development of enterprises in the long run.

CHAPTER

One.



**Independent Office Space,
Immerse in Work**

独立办公空间
打造“沉浸式”办公情感体验

双层区域细分 公私物件明归类

双层大空间收纳侧柜，将置物区划分为：私密收纳、开放收纳、公文包放置区。在规定的地方摆放相应的东西，大大减少了找东西的时间，也让办公生活更具“仪式感”。书籍、文件、公文包等可规划在开放式展柜上，远离地面灰尘，咫尺距离随用随取。

Dual-Purpose Storage—Sufficient and Convenient

Upgrade underdesk storage with the open shelf cabinet of Natural Joy! The upper shelves are perfect to place books, documents, and tools of frequent use. The bottom lockable drawer ensures sufficient privacy and the shelf alongside has a two-shelf height for large-size objects. The bottom shelve elevation frees the cabinet from moist and dirt. Clear, convenient, and neat.



领导精英格局 精致体面格调

外观设计上摒弃了一切复杂、花哨、繁冗的装饰铺陈，目光聚焦在产品功能本身和与空间搭配上，以单色为主色调，局部的拼接色跳跃，使空间简约、典雅并具有和谐气质。突出了产品“服务于人、服务于空间”的本初。

Concise yet Exquisite Details: Leadership Climate

Sometimes less is more: less decorative elements in product appearance, more emphasis on space applicability. One color is used as the dominant color while another appears partially as a harmonious match, making the space neat and elegant. Natural Joy reflects a crucial tenet: Furniture is indeed the server of people and spaces.

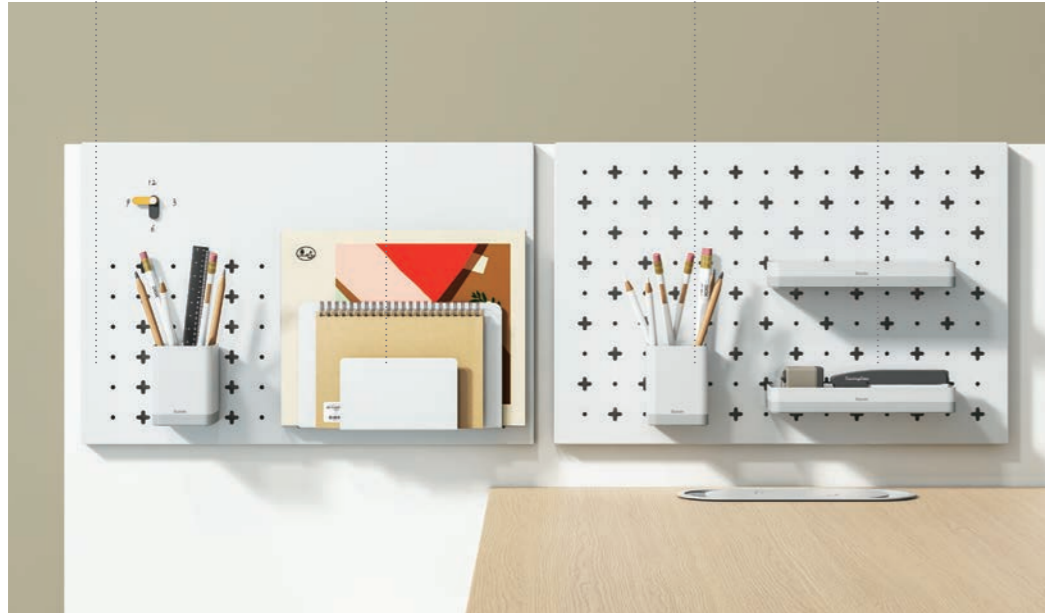


● 艺术挂板
Peg board

● 文件托盘
Book end

● 笔盒
Pencil box

● 文具盒
Tray



升级侧板高标配 置物拼接两不误

可拼接职员桌的高侧板，布局合理可以有效地缓解桌面的压力，让办公拥有更多的活动空间。板面只需要简单添加两块洞洞板即能物尽其用：事项进程表、办公用品等都能轻松完成收纳升级，凌乱感也一举消失。

Heightened Side Panel, More Vertical Storage

When more storage space is required, why not choose a heightened side panel? Two multiuse peg boards with included hanging trays can be mounted on the top of the panel for offices tools, books, and documents. They are more visible and touchable in vertical storage, and more space on the desktop can be saved for further use.

按弹式插座：自带升降功能，按下插座，插板升起；四面皆可充电，满足办公用电体验。

The desktop is equipped with a press-and-popup socket where users can find sufficient room for two/three-pin and USB plugs.



独立 - 组合两相宜 实现办公双模式

关注办公形式的多变, 既能设计成两两拼接的单人办公模式, 也可以独立单桌进行沉浸式办公。灵活切换随时应对工作中全新的灵感和挑战。

Dual Mode: Independent Working and Co-working

The Natural Joy independent workstation is connected in all parts, suitable for focused individual work and can be easily combined into co-working stations for two or more people. It allows flexible switch between different working modes, making working more efficient.



活动侧柜左右移 照顾个人小习惯

设计的美，在于关注实用的人性化需求。
可移动的侧柜，哪有需要往哪搬，照顾办公习惯的同时，也可以单独用来陈列杂志、端放绿植等都是不错的选择。

Mobility Cabinet, Be There as You Wish

Furniture design should be user-oriented. This mobility cabinet with a drawer and open storage can be moved freely under the desk to adapt to different use habits. It can also be used as an independent cabinet for magazines and potted plants.





收纳配件可挂在侧板上, 把零碎的办公物件划分得井井有条, 扩大桌面上的办公面积。

Storage accessories can be hung on the side panel top for sorting and storing office objects, saving desktop spaces for further use.

花槽挂件排排放 成就桌上小气候

对呆板和多彩两种空间的效率调查得出: 在办公室摆放植物, 能提高员工 15% 的工作效率。这得力于鲜活多彩的植物给严肃的办公环境增添了大自然的生机与活力, 为整个空间增添色彩, 有助于舒缓员工的工作压力, 缓解用眼疲劳, 调动员工以饱满的热情进行高效率工作。

Mountable Boxes for Refreshing Potted Plants

Green plants in office can increase working efficiency by 15% according to a survey comparing dull and colorful spaces. Fresh and colorful plants add vitality and liveliness to office environment, which facilitates in relieving the work pressure and eye strain of employees, and reboots the body system with higher working efficiency.



垂直收纳高一层 物件收纳多一柜

桌面再大，面积也是有限的。

利用高度去拉长垂直收纳空间，让物件的分类存储更有条理；柜顶放置文件夹者一些具有观赏性的绿植、摆件，减少桌面物品的堆积；内部隐形走线的设计，让办公空间由上至下都整齐洁净。

Heightened Cabinet, Enlarge the Storage Capacity

When the desktop is fully used, what else can be done for more storage place? The heightened cabinet is designed with one more drawer and its top for placing some decorations or plants. All wires are concealed inside the desk, maintaining the overall neatness.



内部隐形走线减少电源线的外露，空间整洁美观

Routing system is concealed inside the desk to obtain overall neatness.





高桌坐站常交替 缓解久坐综合症

当下办公族工作中 50-70% 的时间都在久坐，是造成背部、颈部疼痛，反复性压力损伤等亚健康隐患的主要原因。高坐姿长桌让员工在略感疲倦的下午，可以选择两三个小时站立办公，促进下肢血液循环、缓解久坐压力，改善身心的健康状况，提高工作参与度。

High Desk for Sit-to-Stand Working

According to statistics, people spent 50%~70% of the working hours sitting, resulting in back and neck pain, and repetitive stress injury. Sit on a high stool matched with Natural Joy high desk can help promote blood circulation in lower limbs and relieve sedentary stress. With body feeling more comfortable, working engagement can be improved.

大容量侧柜 可分类明细储物
The side cabinet with a large capacity is sufficient in sorting and storing objects.



抽屉及侧台 收纳包包和文件
The drawer and the top shelf are perfect to place documents, books, and bags.



高脚踏设计 坐立都能舒适支撑
Feet rest design offers comfortable support in both standing and sitting gestures.



CHAPTER

two.



Composite Office Space, Ecosystem for Collaboration

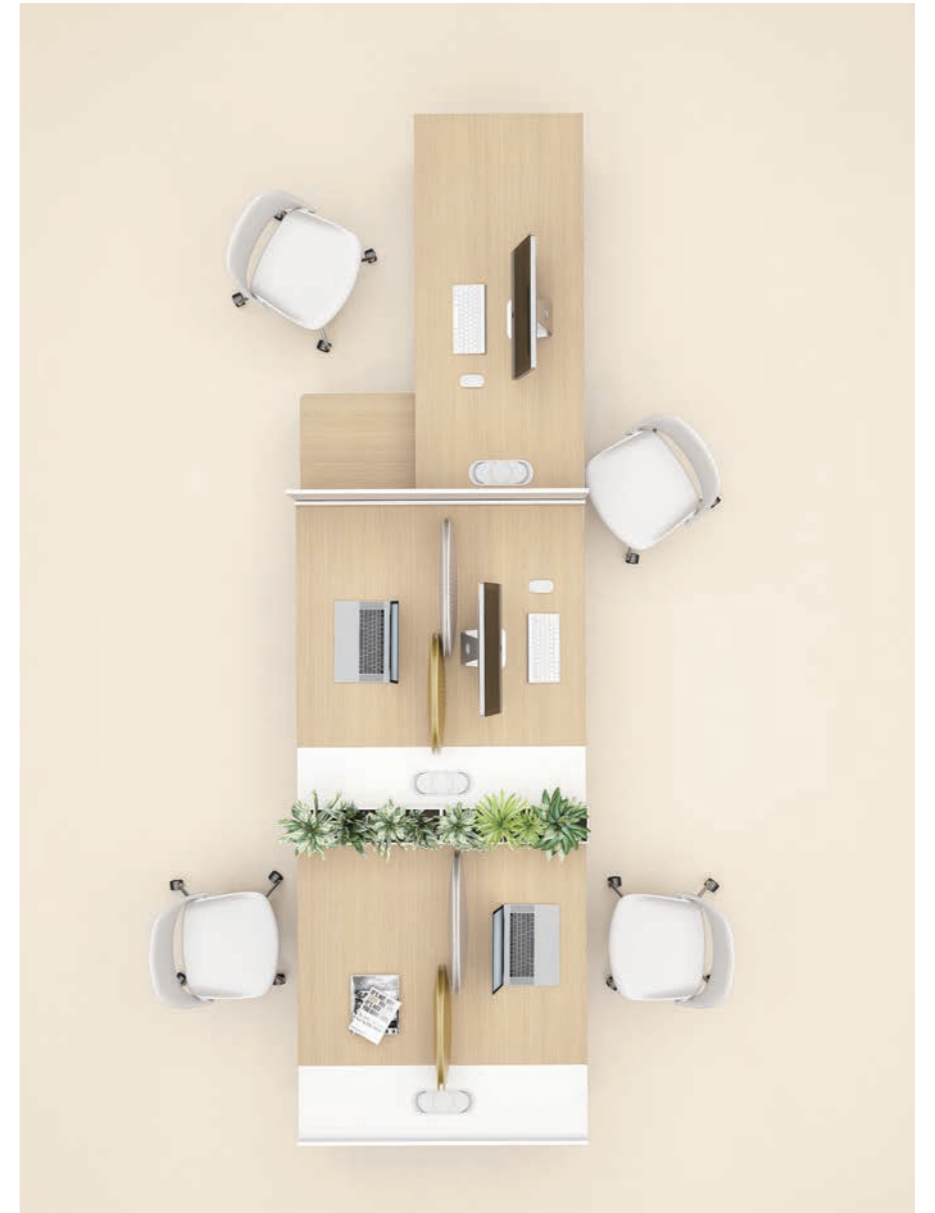
组合办公空间
创建“协同式”办公生态空间



【小组协作模式】

主管职员双联合 上行下达实效高

团队的成长，需要职员的共同努力，也需要领导的无碍指导。管理层与团队成员坐在一起，可即刻讨论、协作、重分工及进行效率监督，帮助团队极速分享概念，推动创意流动；用于传递信息和决策的时间都大大缩短，项目进度跟进和问题反馈上也能游刃有余。



Team Cooperation Mode

Supervisors and Employees, United as One

The growth of a team requires the concerted efforts of both supervisors and employees. Sitting together, they communicate, cooperate with each other, assign works and supervise efficiency so there are free exchanges of inspirations; also, the time needed for conveying information, making a decision, monitoring progress and sending feedback will be greatly shortened.

【即刻交流模式】

高低组合工作站 临时沟通无障碍

高低桌工作站的设立，激励了员工自发式高频次的沟通。两者的交互为办公洽谈系统给出了更优化的解决方案，当临时沟通发生时，员工从低桌起身，即可与他在高桌进行沟通。低桌专注办公，高桌临时沟通，同一个场景之下，解决两种工作形态，更便利、更快速。

Real-time Communication Mode

A Combination of High and Low-talk Whenever You Want

The set-up of high-and-low work station inspires the automatic exchanges among employees in a frequent rate. The interaction offers an optimized solution to office communication system. When off-the-cuff dialogue occurs, they simply rise from low desk and chat at high desk. Low desk allows concentration while high desk enables short talks. Two work modes can be realized in a much more convenient way within one space.





【休闲办公模式】

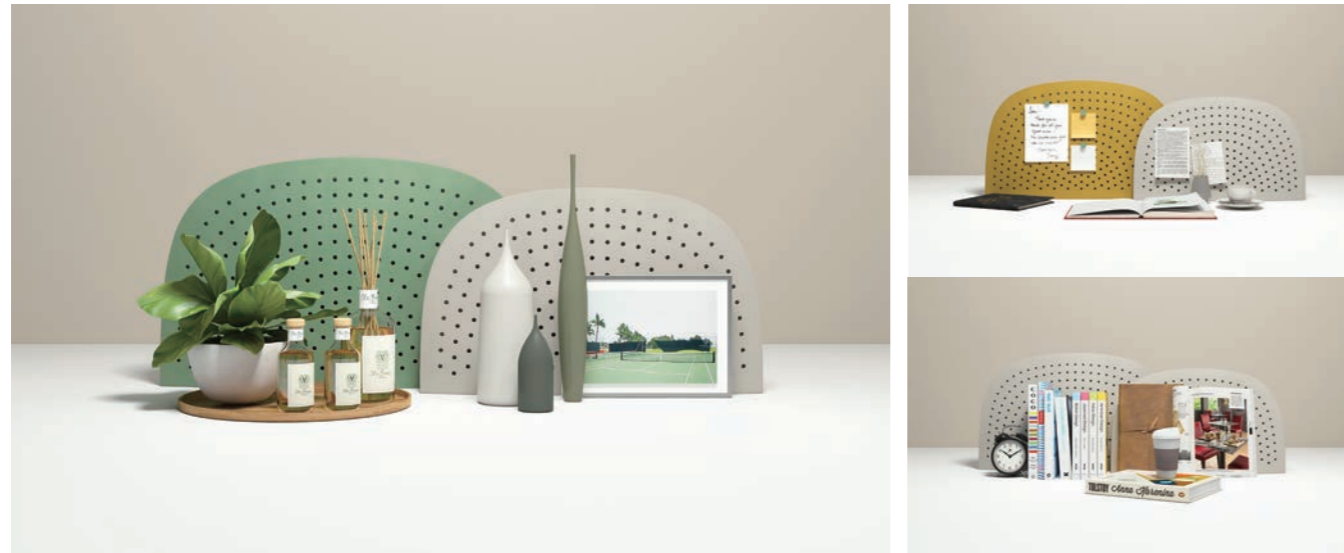
社交休闲轻氧区 情感互联你我他

员工的幸福感离不开办公活动的社交休闲体验。
舒适沙发的加入，将部分空间设置成休闲或自由交流区，员工可从工作中暂时抽出身来，进行短时间的自我放松、临时接待、社交或咖啡时光。
在提升幸福感的同时又能以饱满精力反哺工作，形成良性循环，提高工作产出。

Leisure & Work Mode

A Relaxation Area that Brings Us Together

The happiness of employees requires involvement of social and leisure activities during work. With sofas involved, we transform part of space into a leisure or free-talk area, where employees can get away with work, take a sip of coffee and have free chats. Spirited and energized, workers lift their output and thus a benign cycle is formed.



山脉曲线屏风 新颖组合妙用多

屏风吸取了阿尔卑斯山脉的线条，融合草间弥生的波点艺术，让挡板也是空间的一件艺术品，工作仿佛置身于山林里；搭配皮筋可作为收纳展示区。

Hill-shaped Screen Ascends for Creative Use

The screen absorbs the lines of the Alps hills and is decorated with wave point art of Yayoi Kusama. A screen can also be a work of art. Rubber band can be used to create a storage-display area.

多变的屏风选材，满足灵活的现代办公空间搭配需求。
Versatile screens meet various space matching requirements of modern offices.



磨砂玻璃薄屏
Frosted glass screen



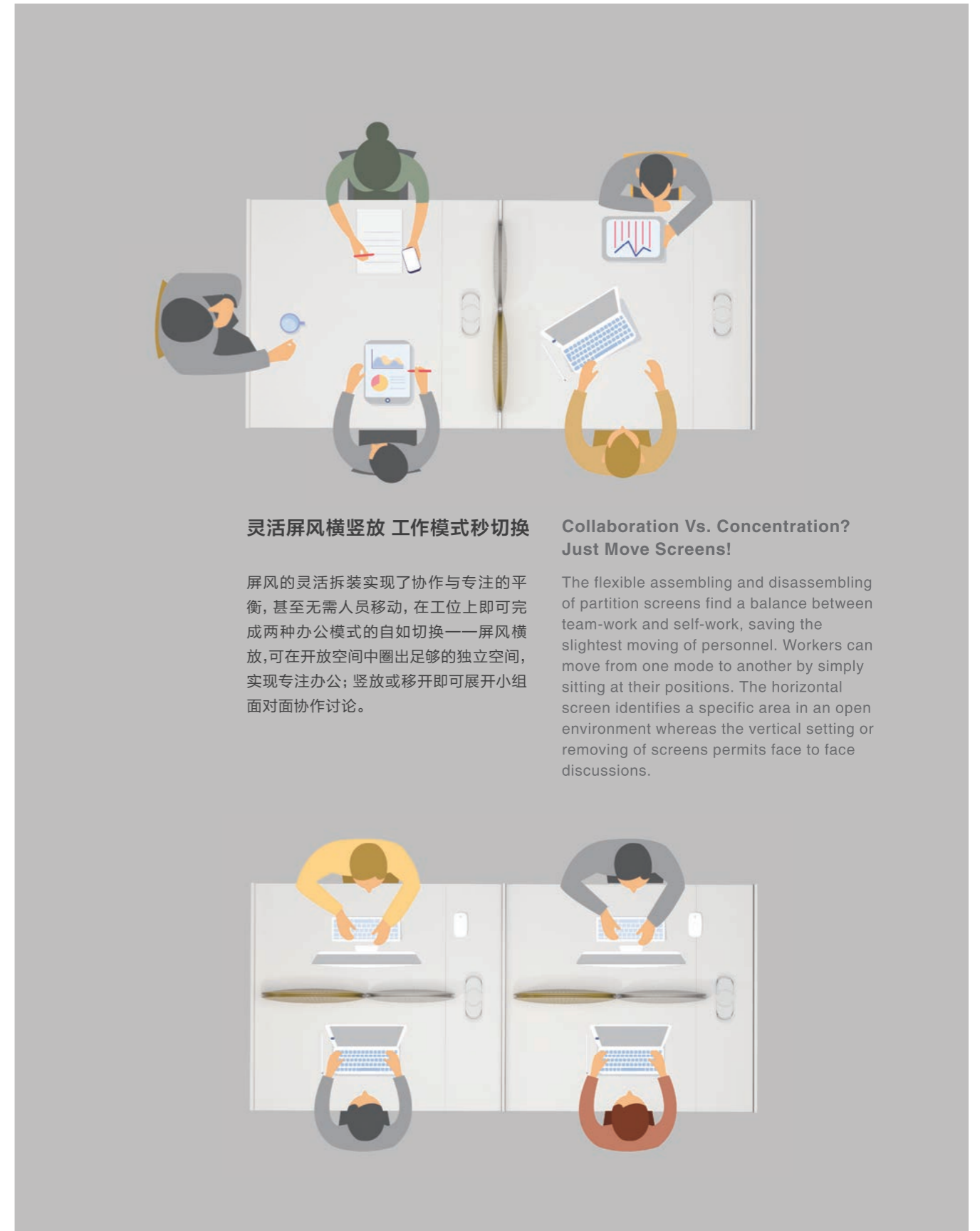
夹胶玻璃薄屏
Laminated glass screen



板式薄屏
Sheet melamine screen



扞布薄屏
Sheet upholstered screen



灵活屏风横竖放 工作模式秒切换

屏风的灵活拆装实现了协作与专注的平衡，甚至无需人员移动，在工位上即可完成两种办公模式的自如切换——屏风横放，可在开放空间中圈出足够的独立空间，实现专注办公；竖放或移开即可展开小组面对面协作讨论。

Collaboration Vs. Concentration? Just Move Screens!

The flexible assembling and disassembling of partition screens find a balance between team-work and self-work, saving the slightest moving of personnel. Workers can move from one mode to another by simply sitting at their positions. The horizontal screen identifies a specific area in an open environment whereas the vertical setting or removing of screens permits face to face discussions.



【头脑风暴模式】

延展桌板就近连 三五成群好商量

工作中集体商讨和决策随时都会发生,会议室却非近在咫尺、随时可用。然之趣会议桌板在拼接设计上的互通性,开启了团队就近协作模式。高、低会议桌可与办公桌、隔断柜连接形成一方小型洽谈区域,方便用于3-5人小组内进行就近快速的方案审计,省下了预约会议室的等候时长。



Brainstorming Mode

Extension Board at Hand, Small Discussion with Ease

Collective discussion and decision may occur at any time, while a meeting room is not always within reach. The inter-connectivity of Natural Joy's conference table panels invokes nearby cooperation. High and low conference tables can be added to work desk and partition cabinet to form a mini chatting area, benefiting fast inspection of plans among a group of 3 to 5 persons. Every individual's time is priceless. The time spent on booking and waiting for a meeting room can be used on things much more meaningful.



隔断柜不仅收纳了共享物品，减少桌面凌乱，还帮助建立了空间边界。

Partition cabinet not only takes in public items and brings an orderly environment, but also creates borders.



空间自然有趣 释放办公生产力

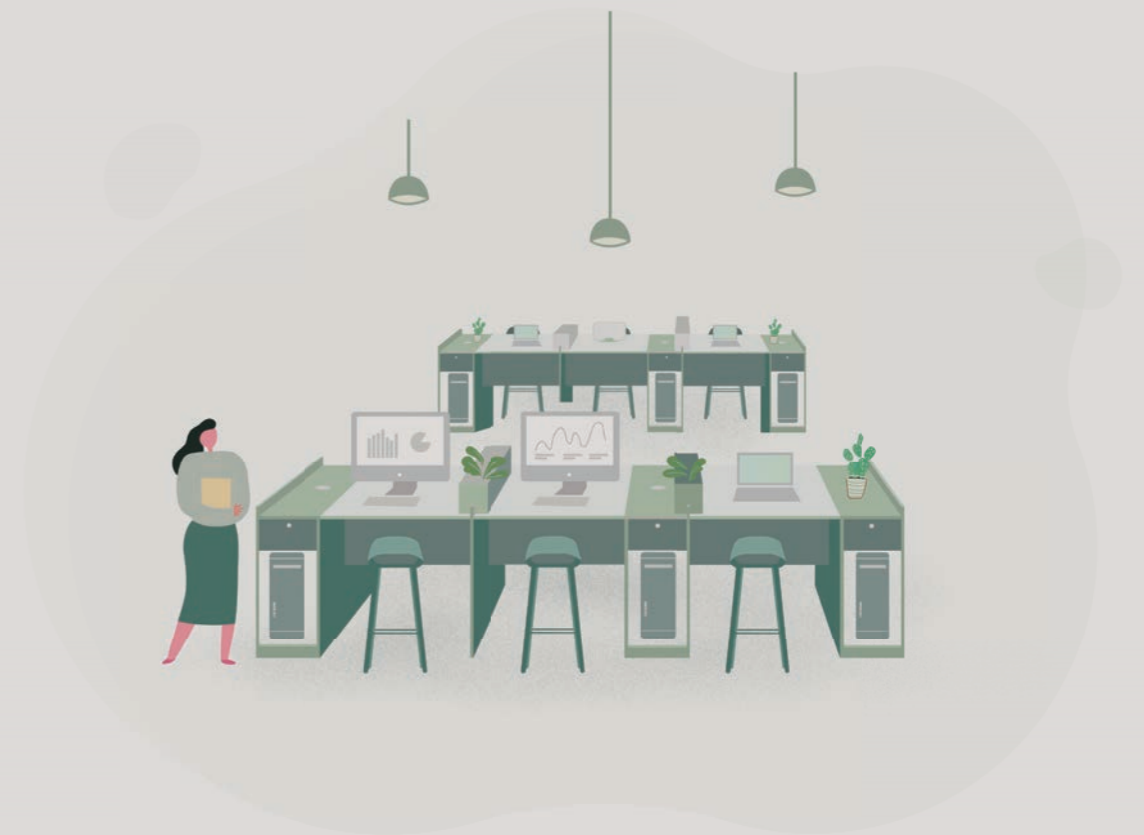
然之趣成长型平价办公套系，适应企业的办公需求，满足当下企业单元化、模块化的管理；也关注了企业的成长性，帮助企业构建出全面的协同办公生态空间，最大限度地利用资产、降低成本、助力企业构建成长型组织，激发员工自发性地探讨、创新，充分释放企业员工的“办公生产力”。

Release Office Output in Space of Joyous Nature

With its complete functional modules and cost-effective performance, Natural Joy series serves as an office space solution package to meet comprehensive needs of developing corporates: high space utility, modular management, future scale expansion, and innovation and collaboration. Natural Joy releases office output to the maximum extent.

CHAPTER

three.



**Cost-effective
Employee Desk: Cater to Start-ups**

平价职员位，助力初创
预算有限功能多变



平价亲民简约系 功能齐全不将就

如何在有限的面积和预算之下，兼顾空间美感及员工的个性化办公诉求是一个挑战。设计师把握住功能流线、秩序清晰，空间简洁的原则，保持办公“耐用、灵活、实用”的习惯常态化格局，集储物收纳、整洁外观、耐用材质、大桌面利用面积一体，充分舒展初创企业的活力。

Simple Design with Complete Functions

With Natural Joy, it is no long a challenge to obtain both space aesthetics and personality needs with limited space and budget. Based on principles of a functional wiring system, a clear order and a simple space, designers insist the normal customs of “durable, flexible and practical” features of office. With storing, aesthetics requirements, durability, practical large-desktops all rolled into one, the spark of entrepreneur business can be felt everywhere.



简约造型百搭风 满足团队速成长

发展, 是企业的永恒命题。

对于初创公司和预算紧张的公司而言, 除了价格优势, 对团队成长扩展的需求也要考虑。简约整洁的风格和家居化原木色调能与任意风格匹配, 打造出和谐有序, 合乎心意的发展系统。

对于敏捷组织的创意的产生有重要的促进帮助。

One-style-fits-all? Yes!

Development is an eternal topic for enterprises.

For incipient and tight-budgeted companies, both economic performance and capacity to embrace the expansion of team should be taken into account. A minimal and immaculate style accompanied by a homely wood-based color tune accommodates to any styles, creates a harmonious and pleasant development system, and drives the burst of inspirations.

100m² 科技风空间定制

Customized 100m² scientific style space



协同式工作站

干练、科技感空间氛围，在电竞行业、IT 行业备受欢迎。复合多元的工作模式，满足行业多会议、多变动、即刻讨论的协作需求。

Collaboration workstation

It's quite popular among electronic-gaming and IT industrials with its clean and tech aura. Composite working modes satisfy needs of numerous meetings, multiple changes, and instant discussions in these industries.



专注式工作站

严谨独立的办公模式从来都是会计、行政、法务部门的标配；简洁白色与温润木色呈现出通透明亮的调性，尤其适合面积不大或自然光线不足的空间，可从视觉上起到增大面积、改善采光的效果。

Concentration workstation

A conscientious and independent mode is commonly seen in account, administration and law departments; Simplistic white together with moderate wooden color presents a bright tune, suitable for gloomy spaces or spaces with limited area.

200m² Ins 风空间定制

Customized 200m² Ins style space



协同式工作站

温馨、轻快的年轻设计元素，给予办公家居化的轻拘束体验感，加大创意的流动且营造出舒心洽谈氛围。是当下广告设计、母婴行业、电商推广等领域的新走向。

Collaboration workstation

Heart-warming and lively design elements deliver home-like coziness in work space, creates a relaxing environment for communication and enhances influx of ideas. It represents the new trend of workplace for advertisement design, maternity, E-commerce industries and so on.



专注式工作站

温馨舒缓的氛围下，明确的空间分区同样为团队独立创作和团队策划充分考量。独立区减少公共环境中的干扰因素，帮助快速投入创作模式；公共会议区划分符合小型企业的使用频率。

Concentration workstation

A clear division of spaces in a relaxing atmosphere helps with individual creation. It allows less disturbances in a public environment and propels self-involvement in creation; the division of meeting area also correspondsto the using frequency of small businesses.

契合初创团队配置

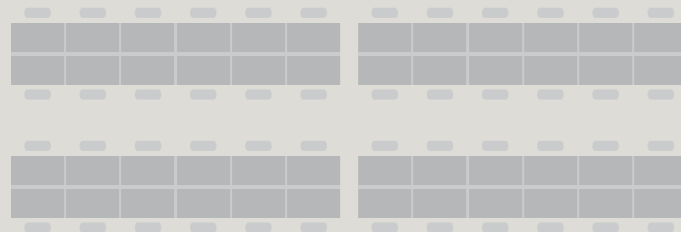
延伸设计 + 空间扩容

Click with Configuration of Start-up Teams

Extension Design + Enlarged Space

然之趣设计兼顾初创团队发展的需求，紧守“基本设置 + 延伸设备”的设计理念，让空间灵活增减，随团队成长规模变化而发展。

In response to the development requirements of teams, Natural Joy upholds the design principle of “basic configuration combined with free extension”, making flexible adding and deduction to space.

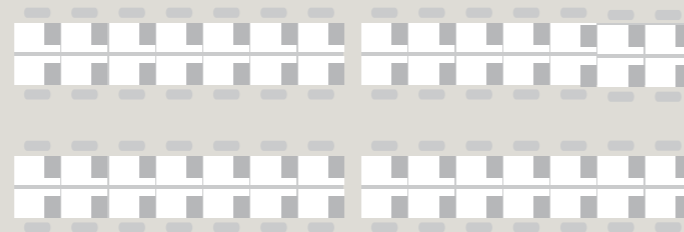


传统长桌设置 (48 人) -

1200mm 长, 无个人储物配置, 缺少系列性高桌配置

Traditional long desk (48 people) -

1200mm wide, no personal storing space, sitting mode only



然之趣小空间设置 (56 人) -

1036mm 长, 可搭配同系列储物配置, 支持与高桌拼接

Natural Joy small space solution (56 people) -

1036mm wide, be matched with systematic storage accessory and long desk

与传统的办公长桌相比，然之趣更有效的使用空间，并让空间得以持续发展，在相同的空间中，可多容纳 17% 的办公人员，高密度空间辅以人性化设置，创造以人为本的环境，促进员工身心健康。

Compared with traditional long office desks, Natural Joy makes better use of space and allows incessant development if necessary. With the help of it, a space can accommodate 17% more workers. It offers a human-oriented atmosphere and cares a lot about physical and mental health of employees.

+ 17%

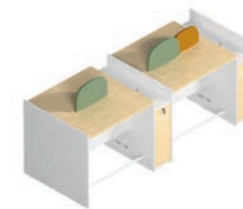
专注办公模式

Concentration mode



四人常规 (H750mm) 工位

Standard workstation (H750mm) for four people



四人高坐姿 (H1150mm) 工位

High seat workstation (H1150mm) for four people



四人常规 (H750mm) 工位

Standard workstation (H750mm) for four people



独立主管工位

Independent executive workstation

协同办公模式

Collaboration mode



四人常规 (H750mm) 工位 + 协同区域

Standard workstation (H750mm) for four people + collaboration area



四人高坐姿 (H1150mm) 工位 + 休闲洽谈区域

High seat workstation (H1150mm) for four people + lounge area



四人常规 (H750mm) 工位 + 高桌洽谈区域

Standard workstation (H750mm) for four + high desk negotiation area



独立主管工位 + 常规职员工位

Independent executive workstation + standard staff workstation

主管桌 Executive desk



DQ80R W1800*D1500*H750(mm)
W2000*D1500*H750(mm)

DQ80L W1800*D1500*H750(mm)
W2000*D1500*H750(mm)

DQ81R W1418*D1200*H1150(mm)
W1618*D1200*H1150(mm)

DQ81L W1418*D1200*H1150(mm)
W1618*D1200*H1150(mm)

DQ82R W1800*D1500*H750(mm)
W2000*D1500*H750(mm)

DQ82L W1800*D1500*H750(mm)
W2000*D1500*H750(mm)



DQ83R W1418*D1200*H1150(mm)
W1618*D1200*H1150(mm)

DQ83L W1418*D1200*H1150(mm)
W1618*D1200*H1150(mm)

无柜职员桌 Staff desk without cabinet



DQ60 W1036*D600*H800(mm)
W1236*D600*H800(mm)

DQ60A W1080*D600*H800(mm)
W1218*D600*H800(mm)

DQ61 W1036*D600*H1150(mm)
W1236*D600*H1150(mm)

DQ61A W1018*D600*H1150(mm)
W1218*D600*H1150(mm)

DQ62 W1036*D1200*H800(mm)
W1236*D1200*H800(mm)

DQ62K W1036*D1200*H800(mm)
W1236*D1200*H800(mm)



DQ62A W1018*D1200*H800(mm)
W1218*D1200*H800(mm)

DQ63 W1036*D1200*H1150(mm)
W1236*D1200*H1150(mm)

DQ63K W1036*D1200*H1150(mm)
W1236*D1200*H1150(mm)

DQ63A W1018*D1200*H1150(mm)
W1218*D1200*H1150(mm)

常规职员桌 Standard staff desk



DQ64L W1140*D600*H800(mm)
W1340*D600*H800(mm)
W1540*D600*H800(mm)

DQ64R W1140*D600*H800(mm)
W1340*D600*H800(mm)
W1540*D600*H800(mm)

DQ64AL W1122*D600*H800(mm)
W1322*D600*H800(mm)
W1522*D600*H800(mm)

DQ64AR W1122*D600*H800(mm)
W1322*D600*H800(mm)
W1522*D600*H800(mm)

DQ65 W1140*D1200*H800(mm)
W1340*D1200*H800(mm)
W1540*D1200*H800(mm)

DQ65K W1140*D1200*H800(mm)
W1340*D1200*H800(mm)
W1540*D1200*H800(mm)



DQ65A W1122*D1200*H800(mm)
W1322*D1200*H800(mm)
W1522*D1200*H800(mm)

高柜职员桌 Staff desk with high cabinet



DQ66L W1140*D600*H982(mm)
W1340*D600*H982(mm)
W1540*D600*H982(mm)

DQ66R W1140*D600*H982(mm)
W1340*D600*H982(mm)
W1540*D600*H982(mm)

DQ66AL W1122*D600*H982(mm)
W1322*D600*H982(mm)
W1522*D600*H982(mm)

DQ66AR W1122*D600*H982(mm)
W1322*D600*H982(mm)
W1522*D600*H982(mm)

DQ67 W1140*D1200*H982(mm)
W1340*D1200*H982(mm)
W1540*D1200*H982(mm)

DQ67K W1140*D1200*H982(mm)
W1340*D1200*H982(mm)
W1540*D1200*H982(mm)



DQ67A W1122*D1200*H982(mm)
W1322*D1200*H982(mm)
W1522*D1200*H982(mm)

高桌职员桌 Staff desk with high desktop



DQ68L W1140*D600*H1150(mm)
W1340*D600*H1150(mm)
W1540*D600*H1150(mm)

DQ68R W1140*D600*H1150(mm)
W1340*D600*H1150(mm)
W1540*D600*H1150(mm)

DQ68AL W1122*D600*H1150(mm)
W1322*D600*H1150(mm)
W1522*D600*H1150(mm)

DQ68AR W1122*D600*H1150(mm)
W1322*D600*H1150(mm)
W1522*D600*H1150(mm)

DQ69 W1140*D1200*H1150(mm)
W1340*D1200*H1150(mm)
W1540*D1200*H1150(mm)

DQ69K W1140*D1200*H1150(mm)
W1340*D1200*H1150(mm)
W1540*D1200*H1150(mm)



DQ69A W1122*D1200*H1150(mm)
W1322*D1200*H1150(mm)
W1522*D1200*H1150(mm)

固定柜 Fixed cabinet



DQ21 W340*D450*H600(mm)

会议桌 Conference table



DQ70 W1200*D1200*H750(mm)
W1500*D1200*H750(mm)
W1800*D1200*H750(mm)

DQ71 W1200*D1200*H1100(mm)
W1500*D1200*H1100(mm)
W1800*D1200*H1100(mm)

DQ90 W400*D1200*H1600(mm)

配件 Accessories



DQ22 (标配两根弹力绳)
W500*D85*H300(mm)
W580*D85*H350(mm)

DQ23 W1200*D400*H25(mm)

DQ24 W526*D29*H20(mm)

DQ25 W50*D48*H35(mm)

DQ26 W50*D50*H35(mm)

DQ27 W526*D145*H201(mm)

**DQ28**

W598*D150*H150(mm)

DQ29

W1200*D400*H25(mm)

DQ30

W526*D29*H20(mm)

爆款职员桌 Best-seller staff desk

**DQ50**W2262*D1200*H800(mm)
W2662*D1200*H800(mm)**DQ50A**W1122*D1200*H800(mm)
W1322*D1200*H800(mm)**DQ33**W630*D185*H300(mm)
W780*D185*H300(mm)**DQ34**

W210*D43*H46(mm)

产品材质 Product material

主色
Main colorS-56 卡斯丁
CastinS-77 白橡木
White oakS-43 卡斯楠
Cass walnutS-57 暖白色
Warm whiteS-57 暖白色
Warm whiteS-78 布纹色
Fabric color辅色
Auxiliary Color柜顶板
cabinet top boardS-74 藕色
Pinkish greyS-57 暖白色
Warm white

DQ22 活动屏产品材质 Product material of DQ22 mountable screens

姜黄色
Ginger莫兰迪绿
Morandi green暖白色
Warm white灰白色
Greyish white

DQ33 活动桌屏产品材质 Product material of DQ33 mountable screens

屏风

Main Color

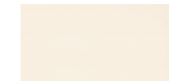
S-74 藕色
Pinkish grey

桌屏托

Auxiliary Color

摩卡色
Mocha芥末色
Mustard砖红色
Brick red

转动插座产品材质 Product material of rotatable sockets

暖白色
Warm white

鉴于产品不断更新，日后产品规格等若有变动，以实物为准，不再另行通知。
Given that products may be updated constantly, no further notice will be given in regard of changes in specification, and the real product shall be considered as final.