

圣奥总部

中国·杭州市钱江新城市民街 200 号圣奥中央商务大厦

Headquarters

Sunon Central Business Building, No.200 Citizen Street,
Qianjiang CBD, Hangzhou, Zhejiang, China
TEL: +86 571 88166666 +86 571 87171168 PC: 310020

萧山生产基地

中国杭州市萧山经济技术开发区宁东路 35 号

Xiaoshan Manufacturing Base

No.35 Ningdong Road, Xiaoshan Eco&Tech Zone, Hangzhou, Zhejiang, China
TEL: +86 571 82833568 PC: 311200

海宁生产基地

中国浙江省海宁市尖山新区安仁路 6 号

Haining Manufacturing Base

No.6 Anren Road, Jianshan New Area, Haining, Zhejiang, China
TEL: +86 573 87800900 PC: 314415

V1-201809P1-3000



M CABINET
M 型文件柜

四种尺寸，桌面大小按需选择
Four sizes of tables for multiple occasions



1100mm/1202mm 高度，坐站健康交流，400mm/800mm 宽度选择，充分利用空间。拼接延展桌面，体验吧台式洽谈时光。

The 1100mm/1202mm-tall cabinet is perfect for healthy sit-or-stand conversations. 400mm/800mm width let you fully make use of the space. Extend your tabletop and enjoy relaxing chatting time.



双门推拉储物柜，360mm 均分 6 格收纳，国标 5 插孔线盒设计，促进洽谈持续高效。

The 360mm-high double-sliding-door storage cabinet is divided evenly into 6 parts. Equipped with a GB standard three-plug socket outlet, it will ensure constant power supply for your negotiation.

储物洽谈柜，收纳办公双赢
Negotiation cabinet with a storage function, a win-win in working and storage



隐藏走线，为每一次交流保持时刻美观。

The concealed cable-routing system helps it to keep its all-time neatness and beauty.



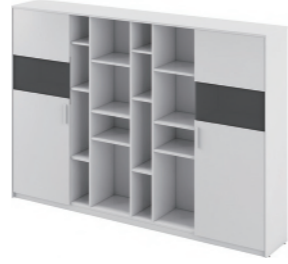
DG97-2
W796*D400*H1956(mm)

DG97A-2
W389*D379*H1956(mm)

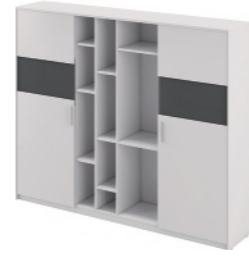


DG98-2
W796*D400*H1956(mm)

DG98A-2
W783*D379*H1956(mm)



DG51-2
W2016*D400*H1668(mm)



DG52-2
W2414*D400*H1668(mm)



DG61-2
W816*D400*H808(mm)



DG79-2
W1412*D400*H750(mm)



DG78-2
W1212*D400*H750(mm)



DG4L/R
W800*D400*H450(mm)



DG88-2
W1200*D400*H1202(mm)



DG89-2
W1200*D400*H1202(mm)



DG11-2
W2400*D1200*H1100(mm)



DG11-2
W1800*D800*H1100(mm)
W1600*D800*H1100(mm)



DGMM-2 扞布上门板
W774*D670*H18(mm)
W774*D770*H18(mm)
W774*D1122*H18(mm)



DGMM-2 扞布下门板
W774*D670*H18(mm)
W774*D770*H18(mm)
W774*D1122*H18(mm)



DGRB-2
W400*D365*H65(mm)



DGTP-2
W796*D396*H85(mm)



DG65-2
W1996*D400*H858(mm)



DG64-2
W1578*D400*H858(mm)



DG63-2
W1669*D400*H808(mm)



DG62-2
W1050*D400*H808(mm)



S-43 卡斯楠



S-28 红苹果



S-37 弗吉尼亚胡桃木



S-56 卡斯丁



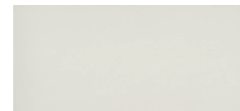
S-50 枫木



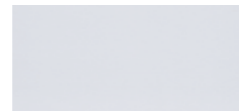
S-10C 克罗摩纳橡木



S-66 尤加利



S-57 暖白



S-29 月光白



S-59 流星灰

TM 系列



TM-VI10B



TM-VI11B



TM-VI21B



TM-VI27B



TM-VI29B



TM-VI30B



TM-VI42B



TM-VI54B



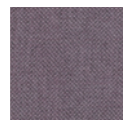
TM-VI64B



TM-VI81B



TM-VI82B

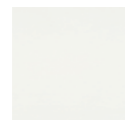


TM-VI90B

实色油漆



莫兰迪绿



亚光白